



Vlaanderen
is natuur

I-GREEN and other connections with the 3LP

AGENTSCHAP
NATUUR & BOS

Dries Gorissen



Vlaanderen
is natuur

I-Green Limburg

Green Infrastructure for
society

AGENTSCHAP
NATUUR & BOS



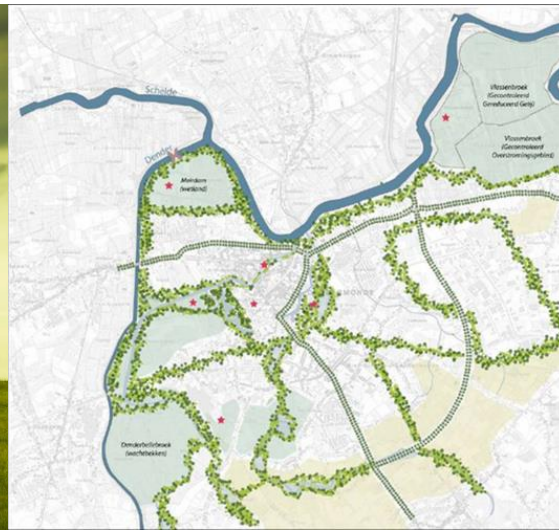
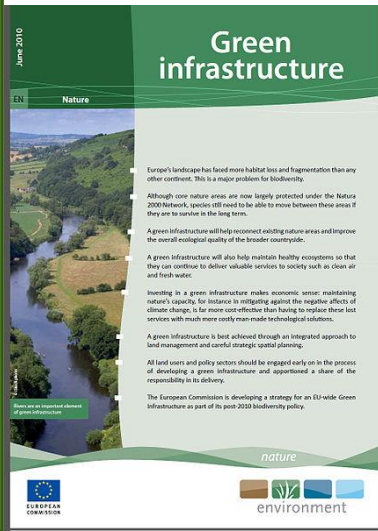
I-Green = Intelligent Green

Green Infrastructure (GI) in Limburg

- Increase and amplify societal contribution
- Upgrade integration in society

GI: Strategically planned network of green areas and landscape features of high quality in rural and urban landscapes

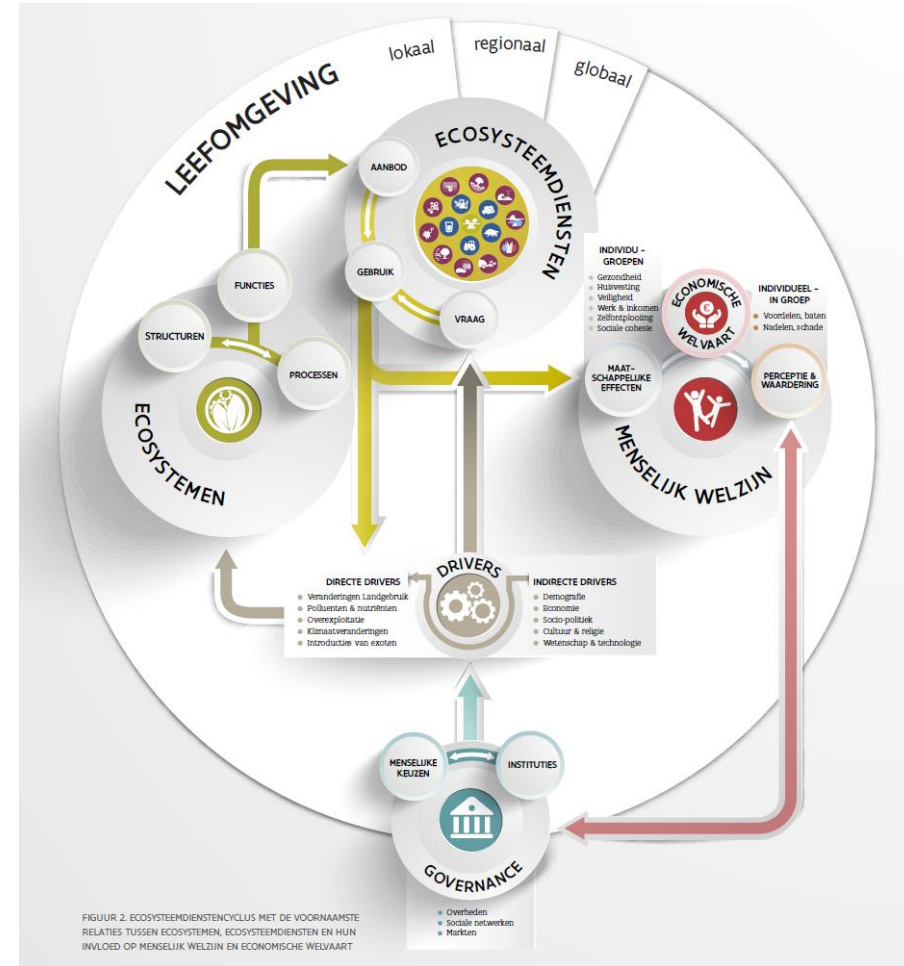
-> Green Infrastructure strategy European Commission





Study as a start

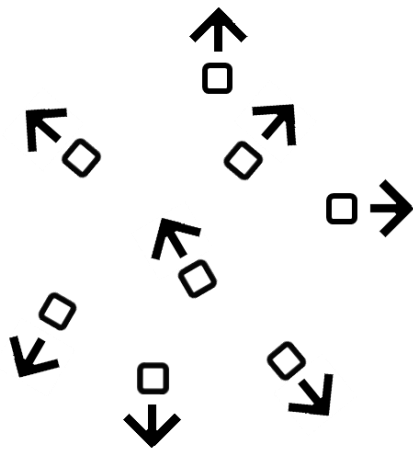
- Stakeholders
- Ecosystem services
- Employment
- Funds and investments
- Indicators



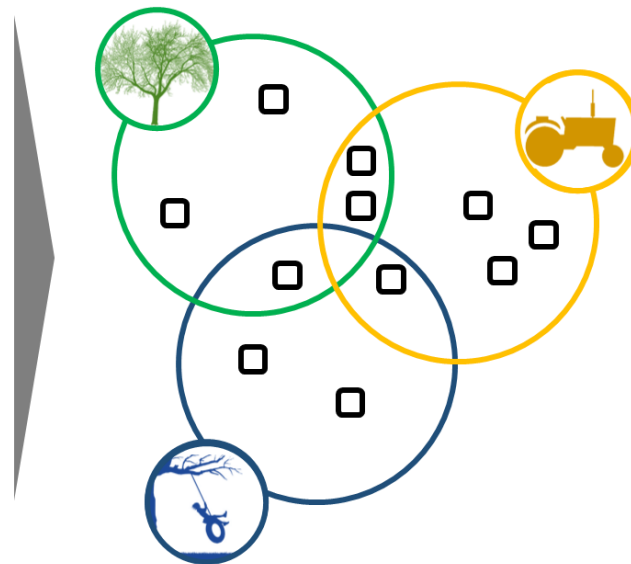
Leverage for a process towards more intensive and wider collaboration, ownership, ... transition

Local customization - participation - acceptance - cross overs - implementation ...

Identification
stakeholders and ambitions

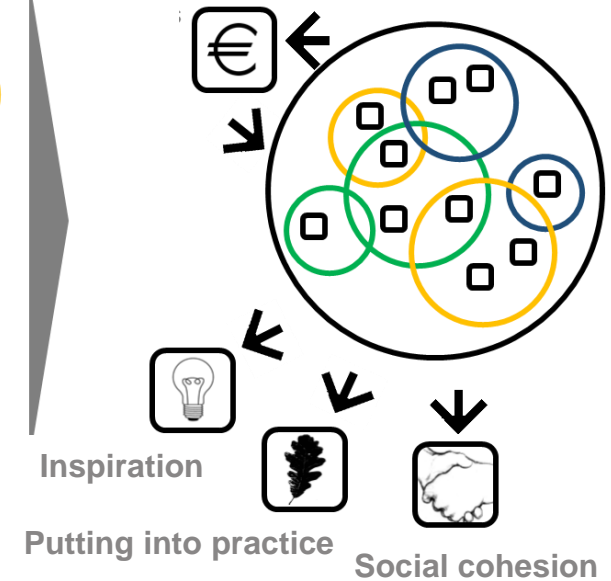


Determination common interests,
development general
vision/framework



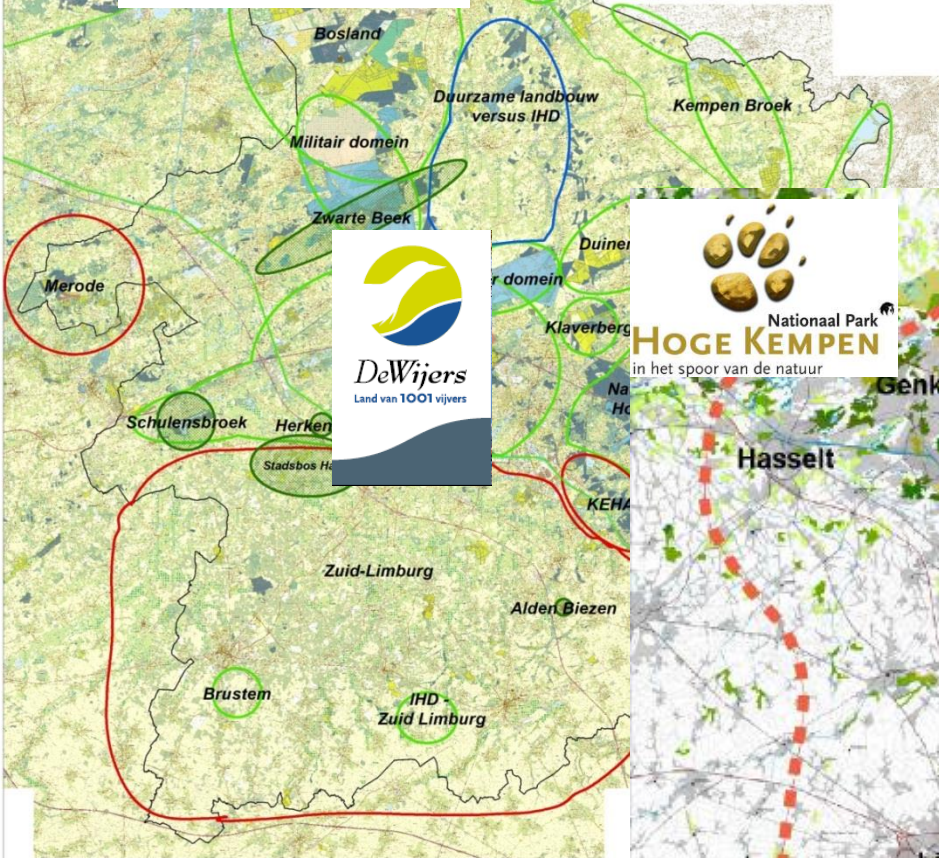
Systematical implementation based
on integral approach/vision

Funding and economical return



bosland
dromen tussen bomen

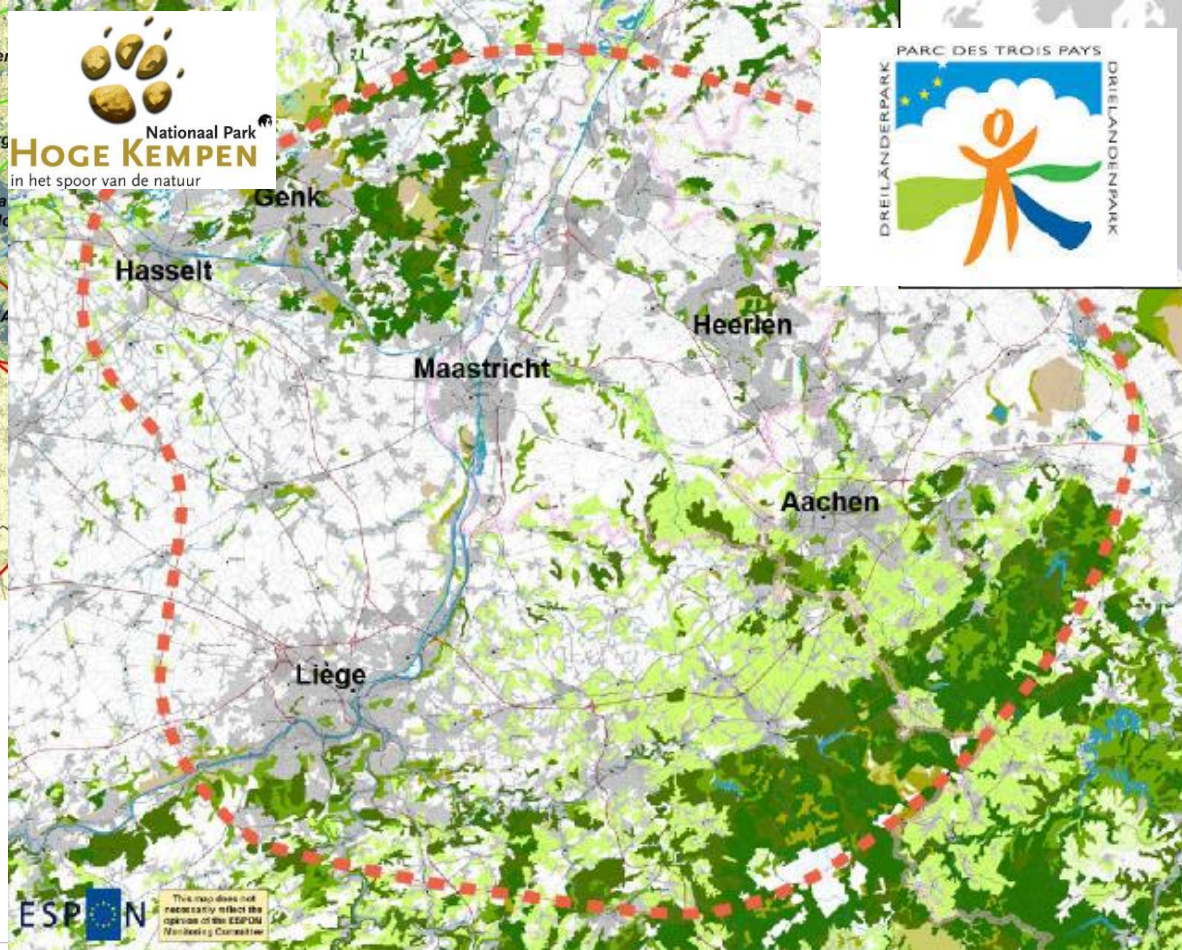
Internationaal Landschap
Grote Heide



DeWijers
Land van 1001 vijvers

Nationaal Park
HOGHE KEMPEN
in het spoor van de natuur

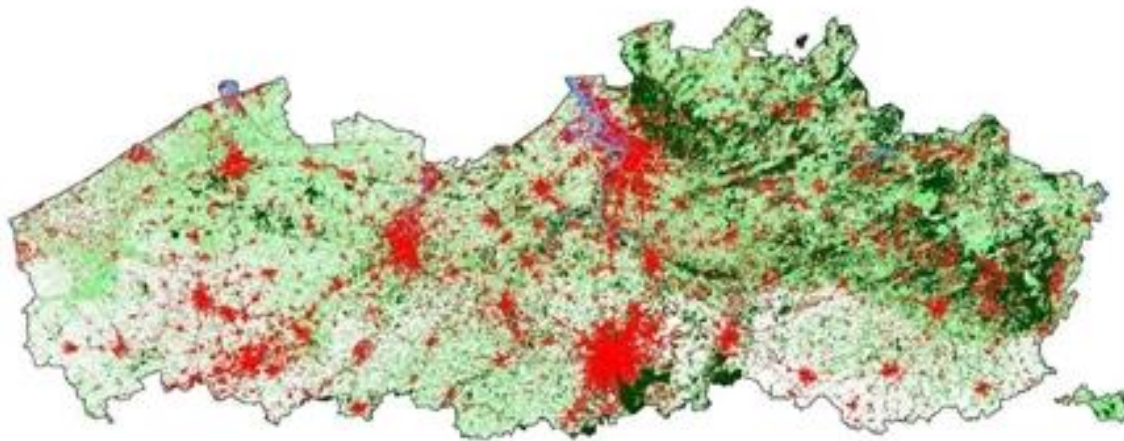
PARC DES TROIS PAYS
DREILÄNDERPARK
DREILÄNDERPARK



Towards a defragmentation
of the rural landscape and
concentration/optimization
of the urban areas in the
northwest of the 3LP

AGENTSCHAP
NATUUR & BOS

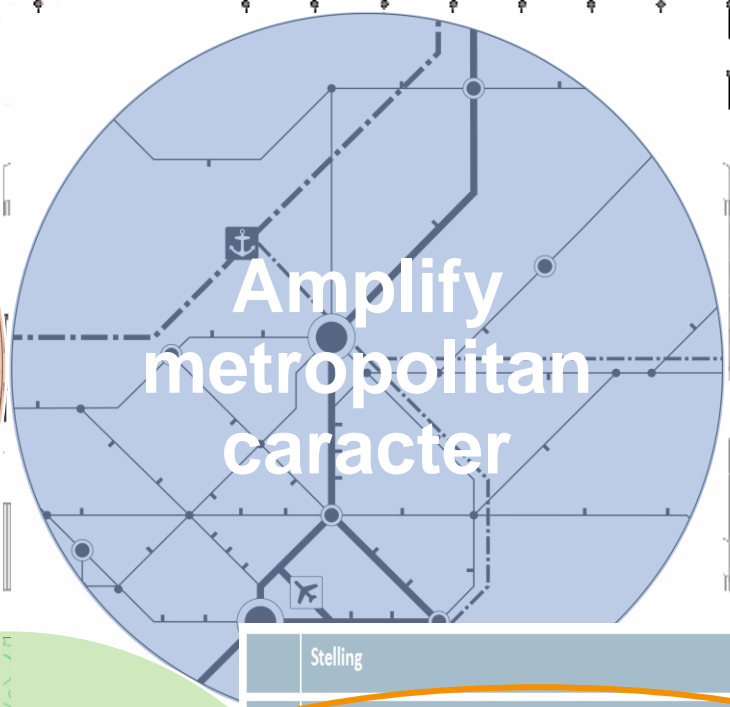
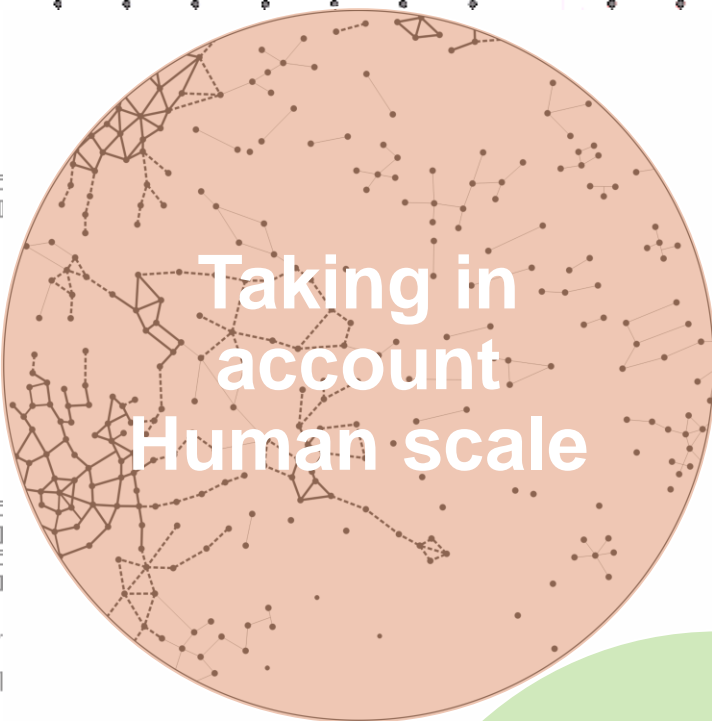




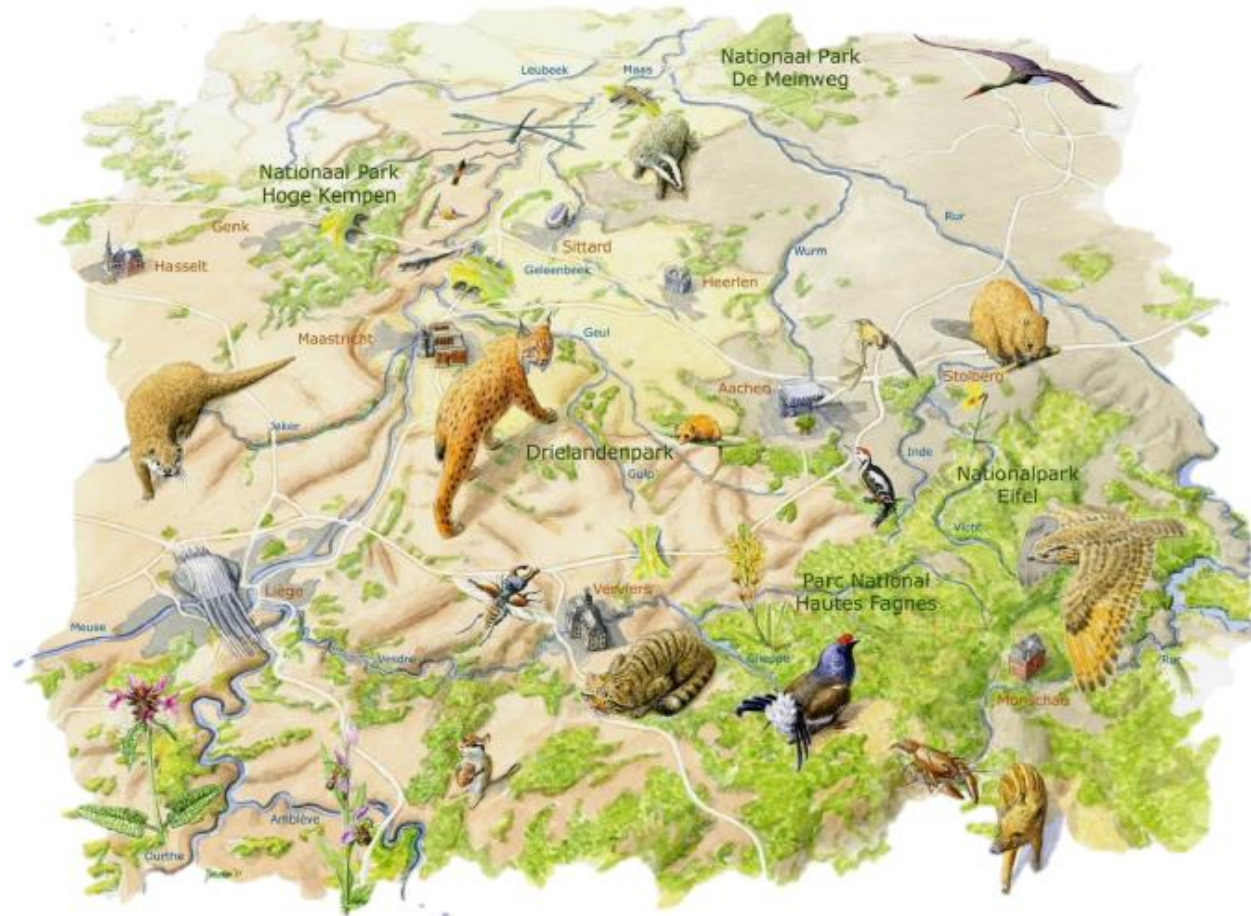
Urban area in 2000 - today 32% of Flanders is urban
(inclusive gardens and parks)

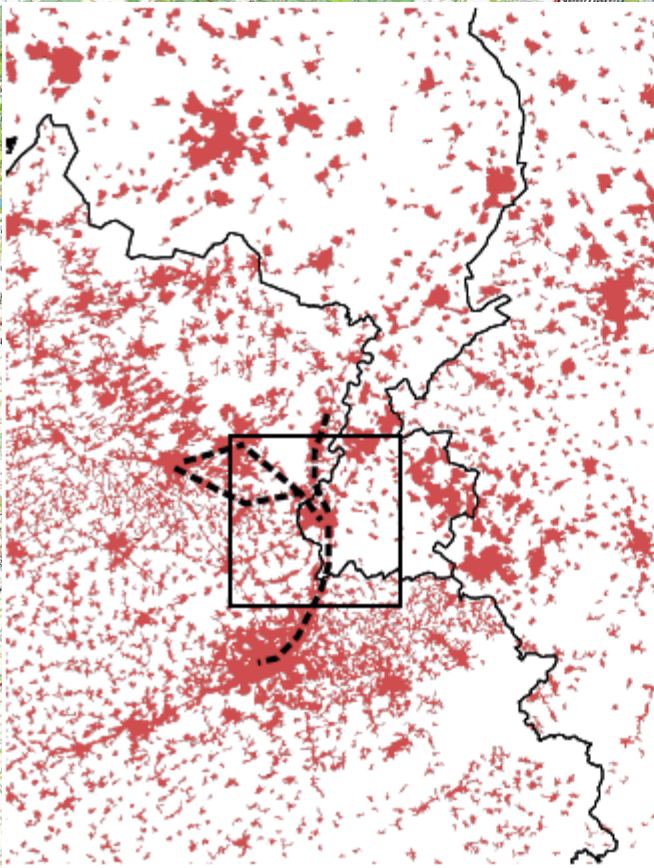


Urban area in 2050 - business as usual

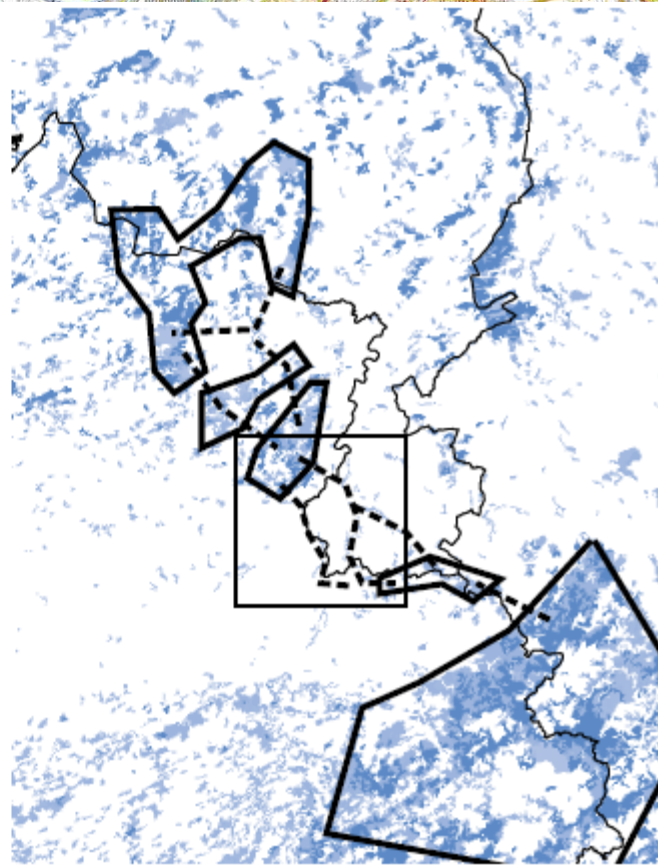


Stelling	Score op 10
1. De woonomgeving vernieuwen	7,79
2. Verharding van de open ruimtes inperken	7,74
3. Meer doen met minder ruimte	7,65
4. Een metropool op mensenmaat	7,35
5. De juiste activiteit op de juiste plaats	7,34
6. Hernieuwbare energie de ruimte geven	7,33
7. Grote stukken open ruimte creëren	7,17
8. De betekenis van open ruimte verbreden	6,94
9. Vlaanderen verbinden met de wereld	6,60
10. Keuzes maken in suburbane gebieden	6,51
11. Omgevingen van topklasse	5,66





verstedelijking en verdichting



landschappelijke gehelen en ontsnippering

TWEE GEKOPPELDE LANDSCHAPPEN

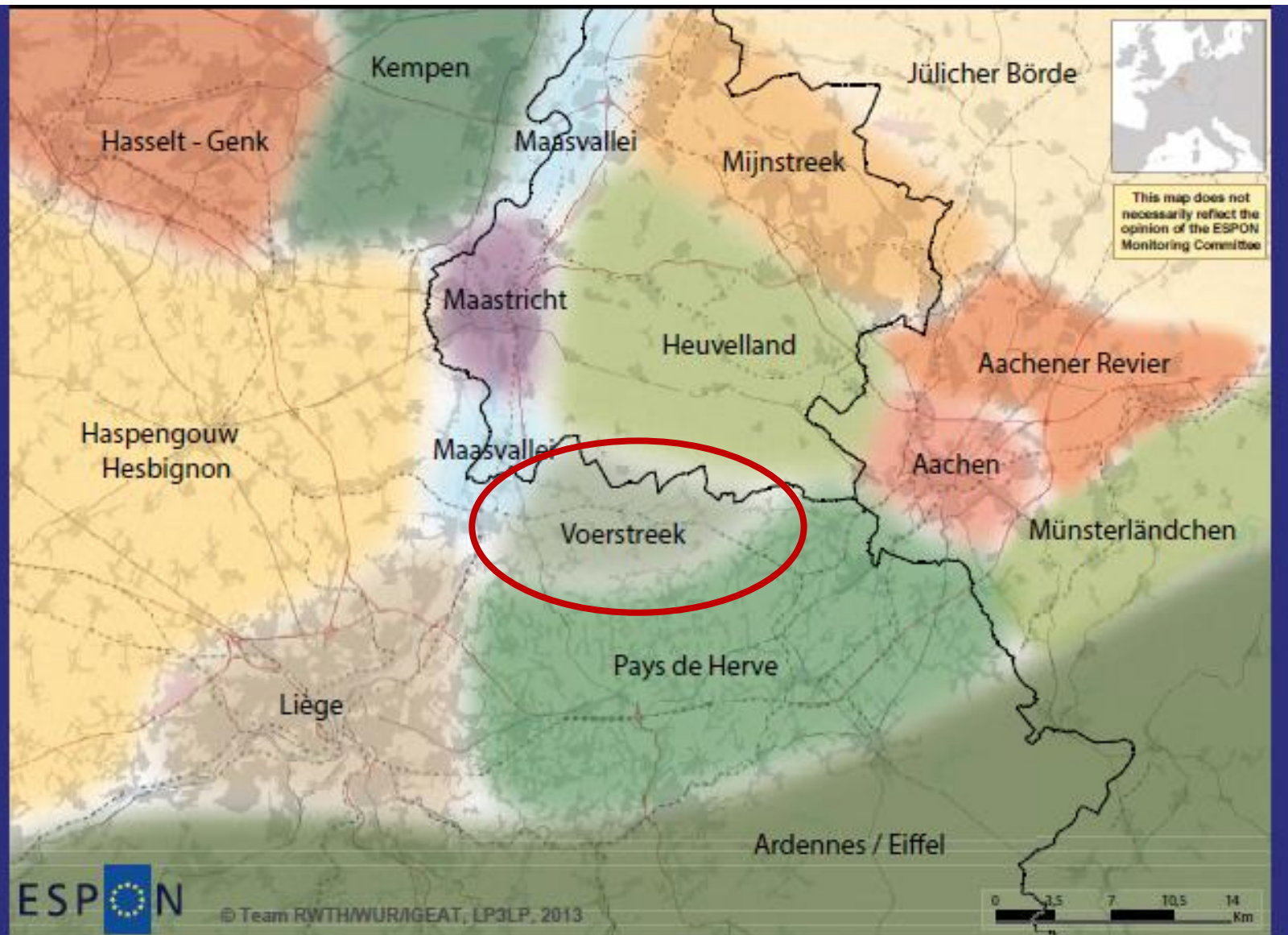
Embedding in 3LP
by connections with the Netherlands and

Strategic partnership for Voeren

AGENTSCHAP
NATUUR & BOS



Regional identities in the 3LP



Voeren is a brand in itself



- Agricultural landscapes - livestock breeding - hedgerows/hedges
- Natural landscapes and values (31% Natura 2000)
- 60% consigned as heritage area
- Tourism

Challenges

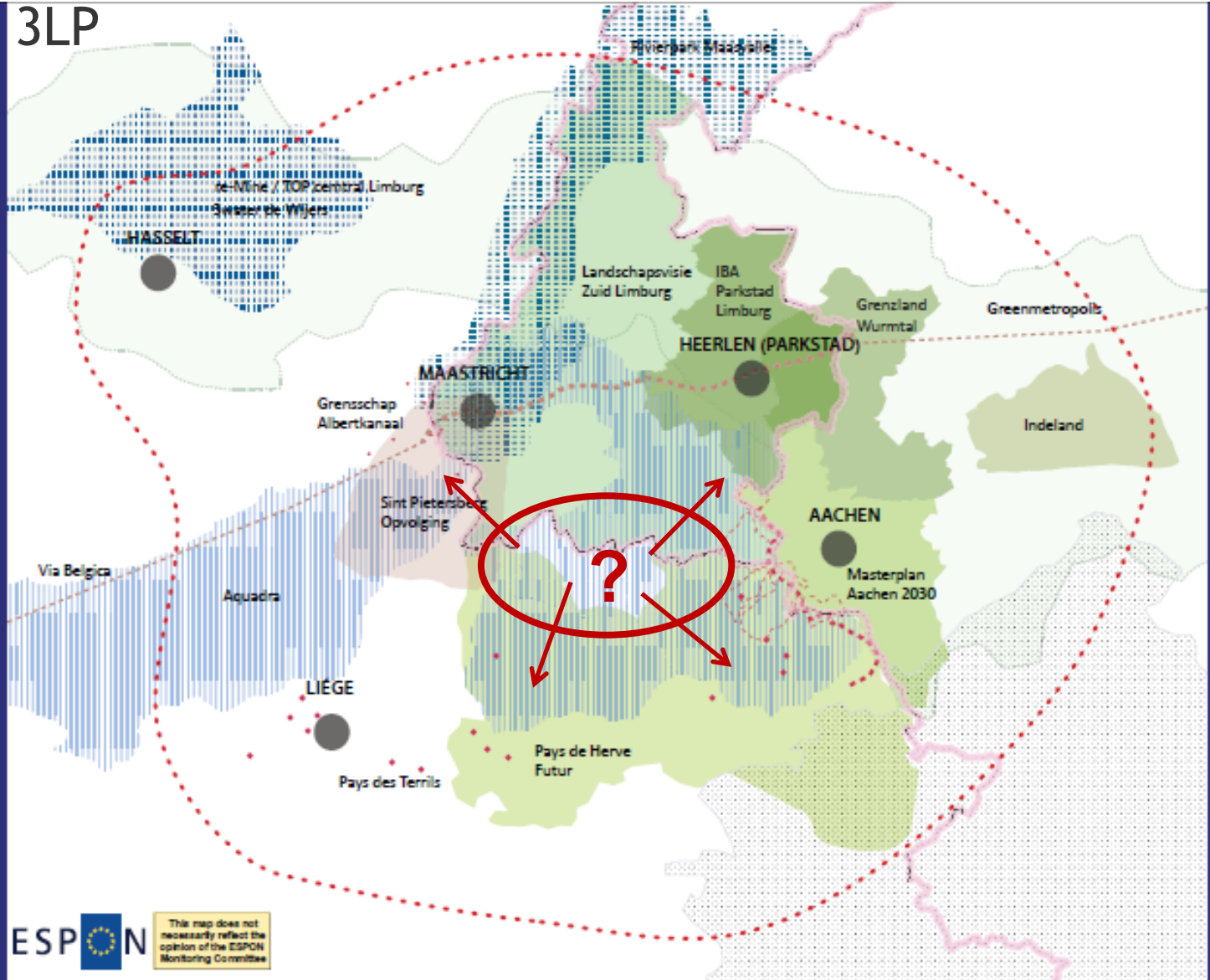
- Intensification of agriculture
- Touristic pressure
- Balancing the dynamics and development of the key economy of Voeren with conservation of the key values





Regional stakeholder initiatives in the

3LP



General objective: Conservation and development of the specific rural functions and values of the Voeren region, based on an integrating, transnational and cross sectoral approach



Inventory and analysis of Voeren based on available data and reports and on existing plan processes and policy documents

Development of an integrated vision, based on a participative process

Development and realisation of a concrete action programme with special attention for:

- Sustainable agriculture
- Biodiversity and cultural historical landscape values
- Toeristic profile
- Local acceptance



Coördination by colleagues of
Regionaal landschap Haspengouw en Voeren
contact: Christel.cornelissen@rlh.be

Organization structure

- Project office
- Steering committee
- Feedback platform
- Research team



Supporting Research project Analysis of current status, understanding of drivers, start of development of strategies and instruments



Overleg met Projectgroep Voeren
4 Februari 2015



   Instituut voor
Natuur- en Bosonderzoek

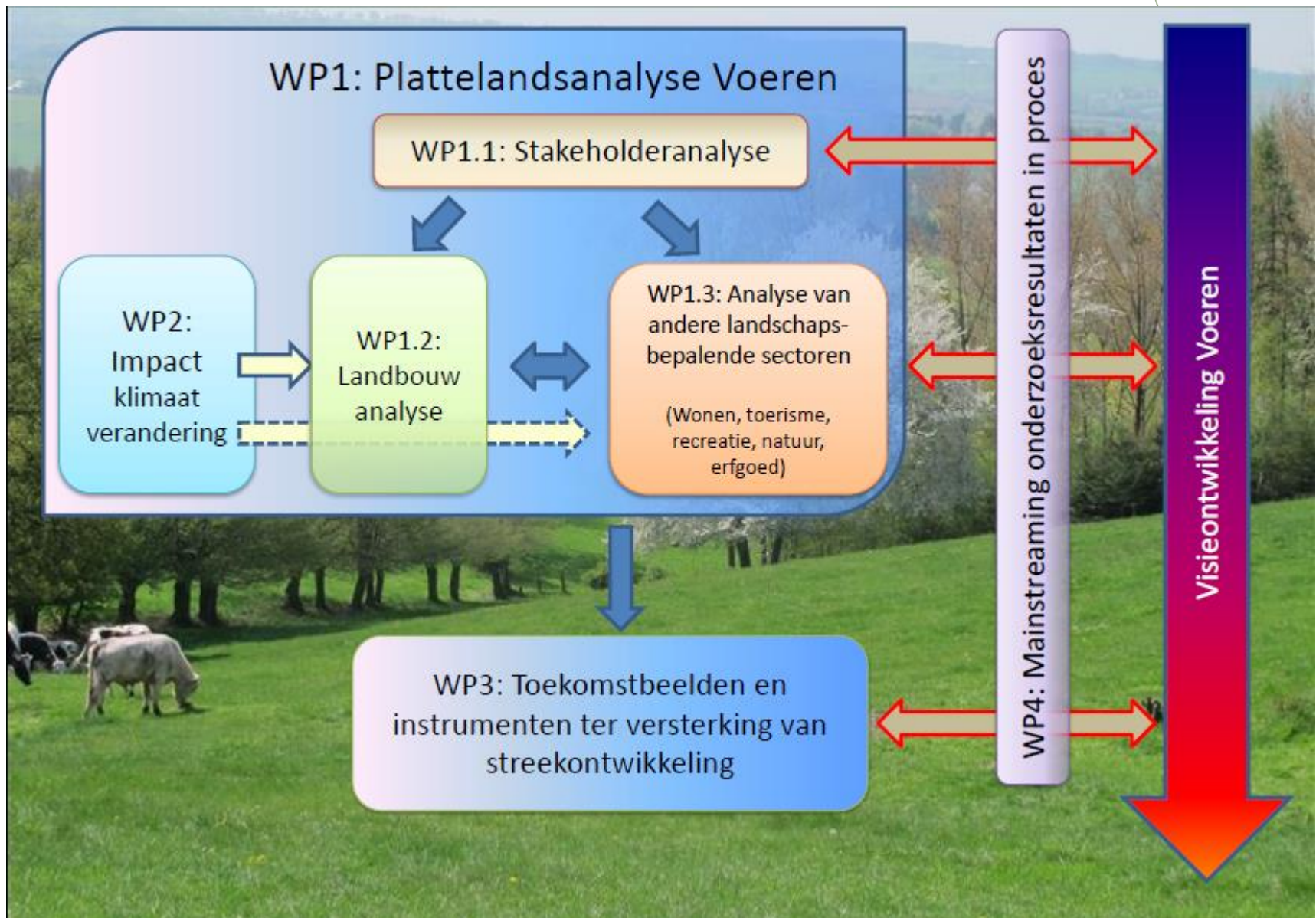


Institute for Agricultural and Fisheries Research

INSTITUUT
NATUUR- EN BOSONDERZOEK

 Wetenschappelijke instelling van de Vlaamse overheid

www.inbo.be





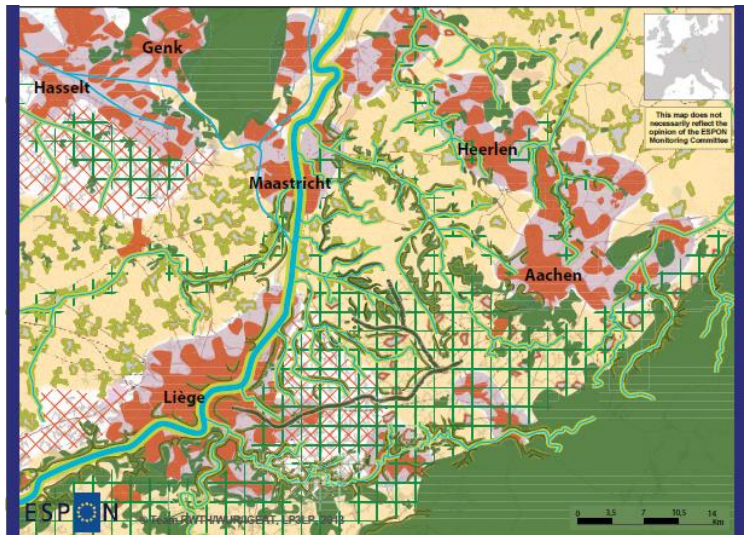
Vlaanderen
is natuur

Voeren in the 3LP

AGENTSCHAP
NATUUR & BOS

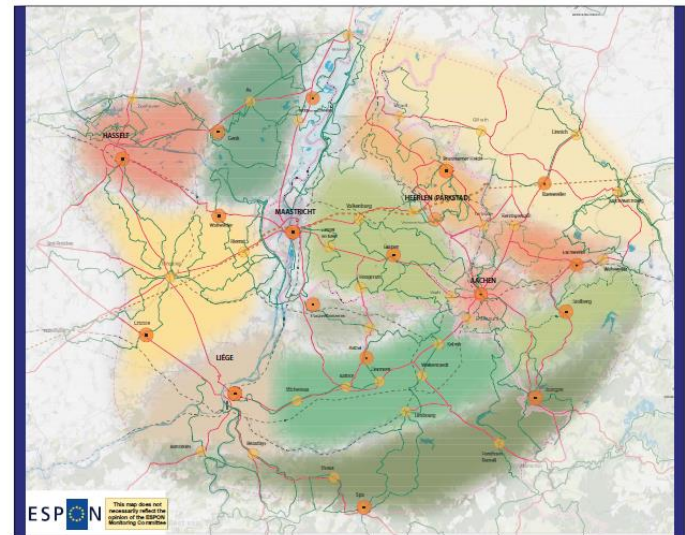


4. A landscape policy for the 3 Countries Park: Recommendations at regional cross-border level.....	59
4.1. Introduction.....	59
4.2. The 3 Countries Park (3LP) as a future “European cross-border landscape partnership” for high-quality and innovative landscapes.....	61
4.3. Thematic strategies	64
4.3.1. Green infrastructure strategy	64
4.3.2. Cultural heritage and accessibility strategy	67
4.3.3. Complementary biomass strategy.....	70
4.3.4. Quality production strategy	72
4.4. Synergies and conclusions	75



EUROPEAN UNION
Part-financed by the European Regional Development Fund
INVESTING IN YOUR FUTURE

Local level: not to scale
Source (background): CORINE 2012



EUROPEAN UNION
Part-financed by the European Regional Development Fund
INVESTING IN YOUR FUTURE

Local level: LAO2
Source: Province of Limburg(BE), SPW(BE), Province of Limburg(NL), Stikbrenging Aachen(DE), Beschikkingenagrijbouw, CORINE, 2012

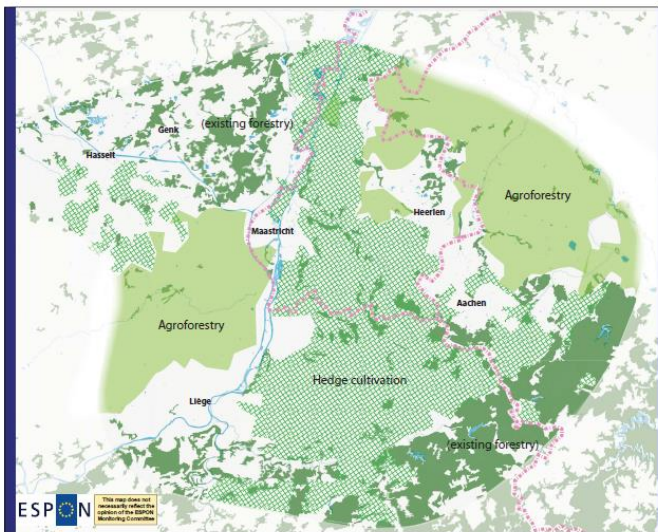
MAP 25 - CULTURAL HERITAGE AND ACCESSIBILITY STRATEGY



LEGEND

- access hubs (proposal)
- old countryroads (existing)
- major cycling routes (existing)

Local level: LAO2
© TEAM RWTHAACHEN, Project LPL12 012021



EUROPEAN UNION
Part-financed by the European Regional Development Fund
INVESTING IN YOUR FUTURE

Local level: LAO2
Source: Province of Limburg(BE), SPW(BE), Province of Limburg(NL), Stikbrenging Aachen(DE), Beschikkingenagrijbouw, CORINE, 2012

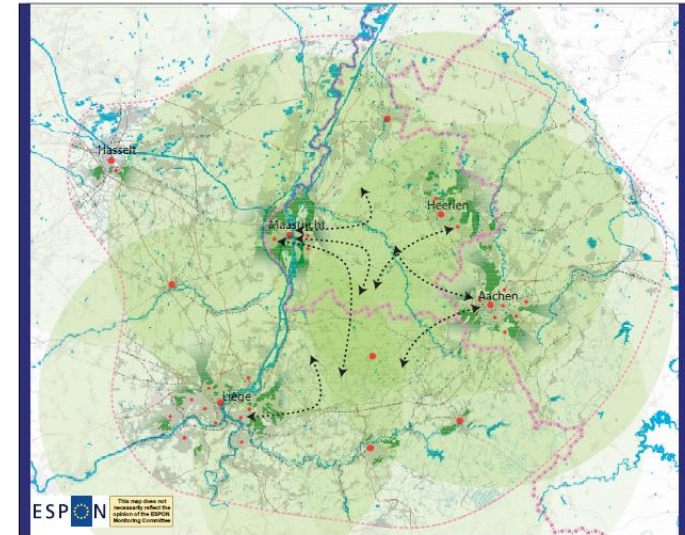
MAP 26 - COMPLEMENTAR BIOMASS STRATEGY



LEGEND

- Agroforestry
- Hedge cultivation, Agro-wood contour strips, Effluent treatment plantation
- existing forestry (low to no additional biomass potential)

Local level: LAO2
© TEAM RWTHAACHEN, Project LPL12 012021



EUROPEAN UNION
Part-financed by the European Regional Development Fund
INVESTING IN YOUR FUTURE

Local level: LAO2
Source: Province of Limburg(BE), SPW(BE), Province of Limburg(NL), Stikbrenging Aachen(DE), Beschikkingenagrijbouw, CORINE, 2012

MAP 27 - QUALITY PRODUCTION STRATEGY



LEGEND

- Pilotarea
- ca. 250m distances to cities „short retail connections“
- Urban-Agricultural parks
- Local markets/retailers (indicative assumptions)
- Urban Areas

Local level: LAO2
© TEAM RWTHAACHEN, Project LPL12 012021



Thank you



Vlaanderen
is natuur

Dries Gorissen
Agentschap voor Natuur en Bos
Dries.gorissen@lne.vlaanderen.be