



DREILÄNDERPARK
PARC DES TROIS PAYS
DRIELANDENPARK

Le paysage construit : entre logement abordable et ‘stop au béton’
Infrastructure verte et grise dans le cadre du dialogue transfrontalier

Het gebouwde landschap : Tussen betaalbare woonruimte en ‘betonstop’
Groene en grijze infrastructuur in de grensoverschrijdende dialoog

Die gebaute Landschaft : Zwischen bezahlbarem Wohnraum und ‘Betonstop’
Grüne und graue Infrastruktur im grenzüberschreitenden Dialog



INTRODUCTION – Dr. Anja Brüll – project leader

Euregionales Forum - Forum eurégional - Euregionaal symposium, Eupen, 19/11/2019



DREILÄNDERPARK
PARC DES TROIS PAYS
DRIELANDENPARK



Landscape partnership & platform in the EMR Cooperation of 13 partners from B, NL, D

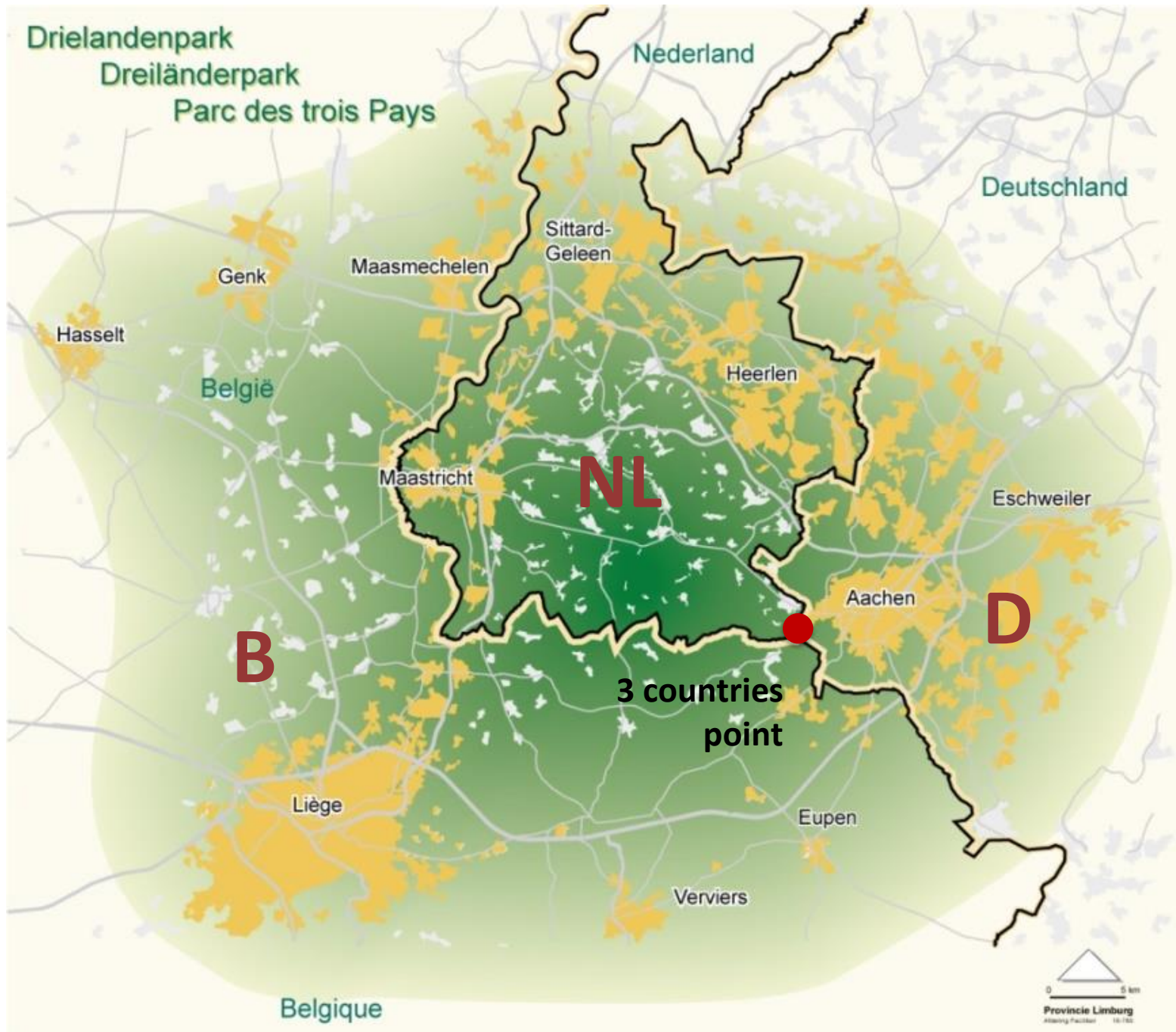


provincie limburg



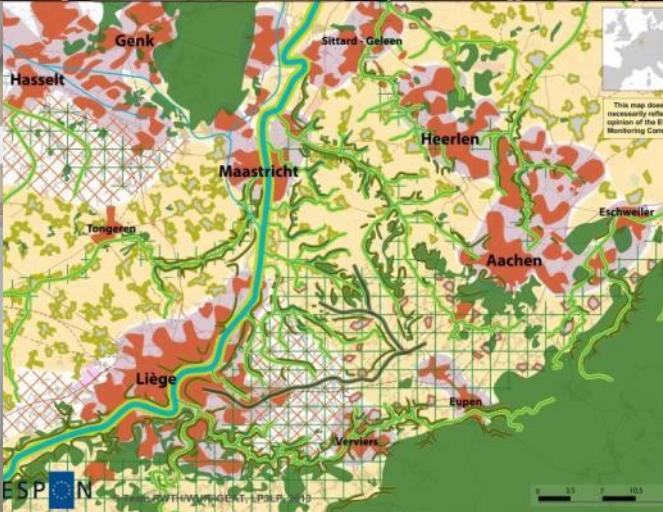
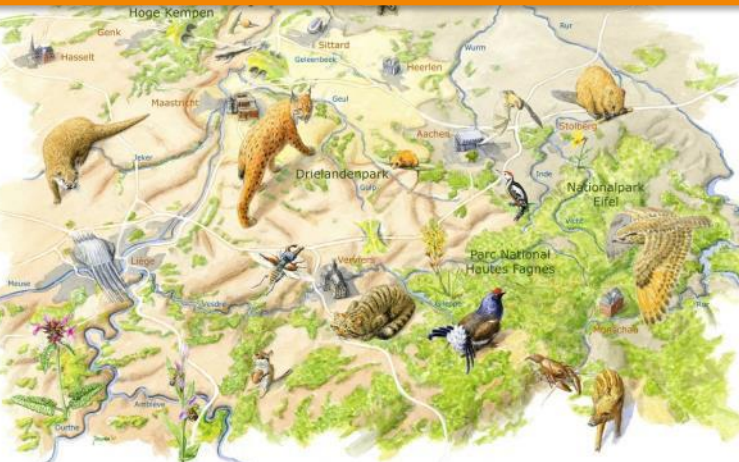
Wallonie



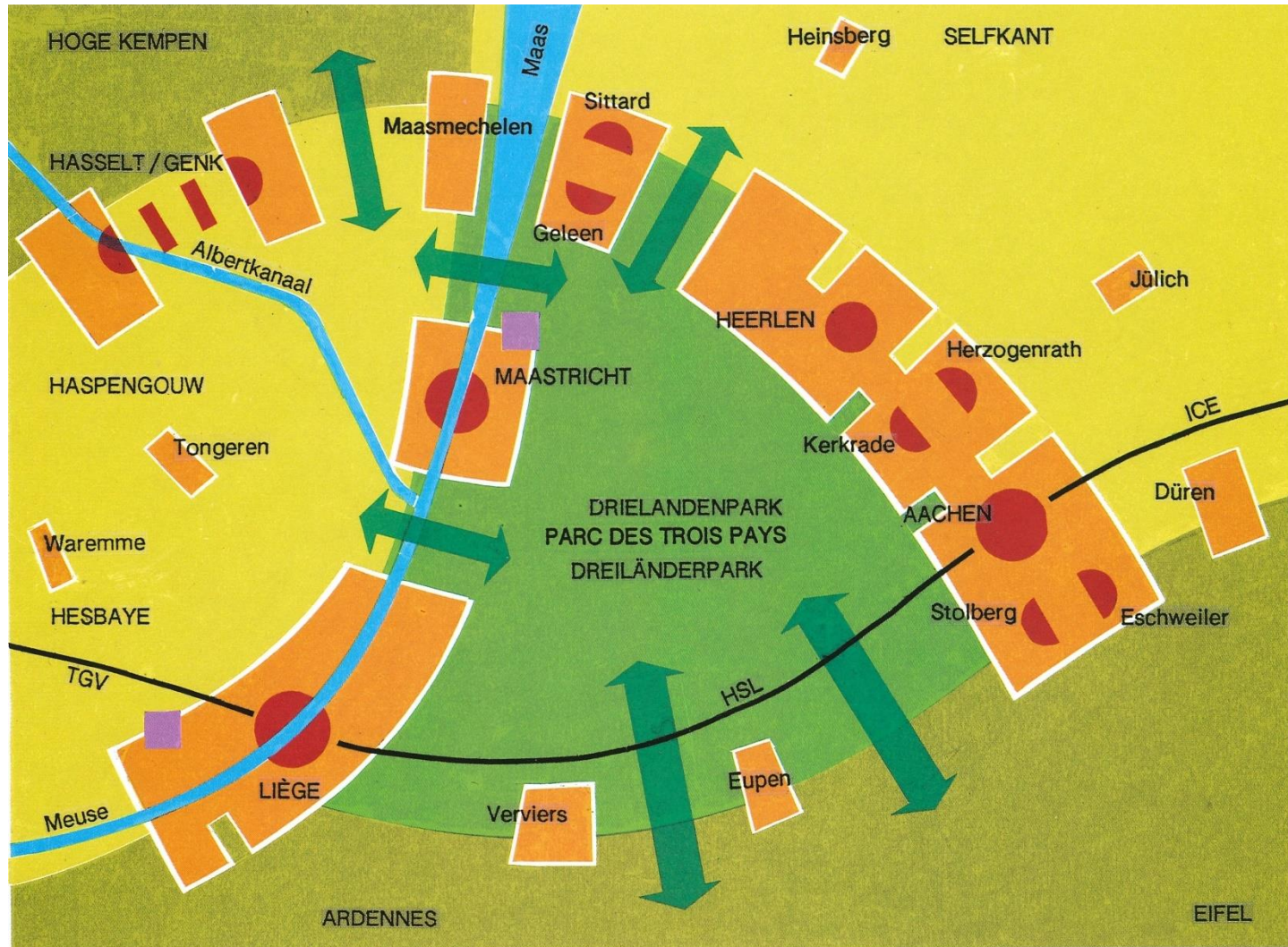




Stimulation of cross-border collaboration

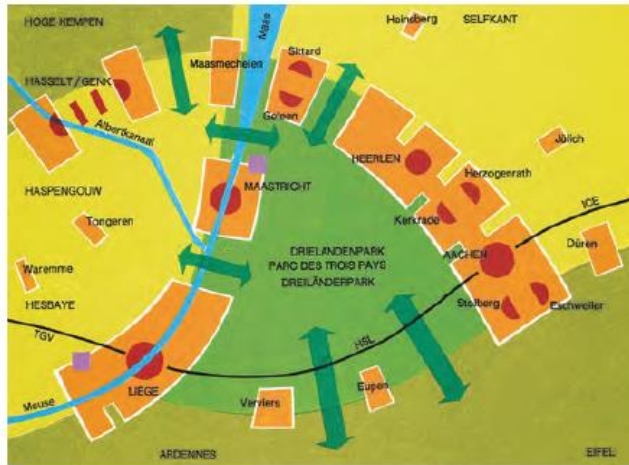


MAHL Concept 1993



REGIONAL DESIGN – spatial studies & visions

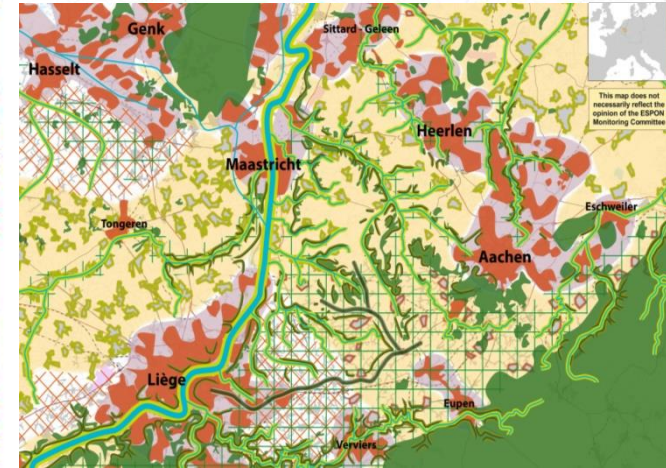
**MAHL Spatial development
perspective
1993**



**Three Countries Park
development perspective 200
1-2003**



**ESPON study LP3LP
landscape framework
2012-2014**





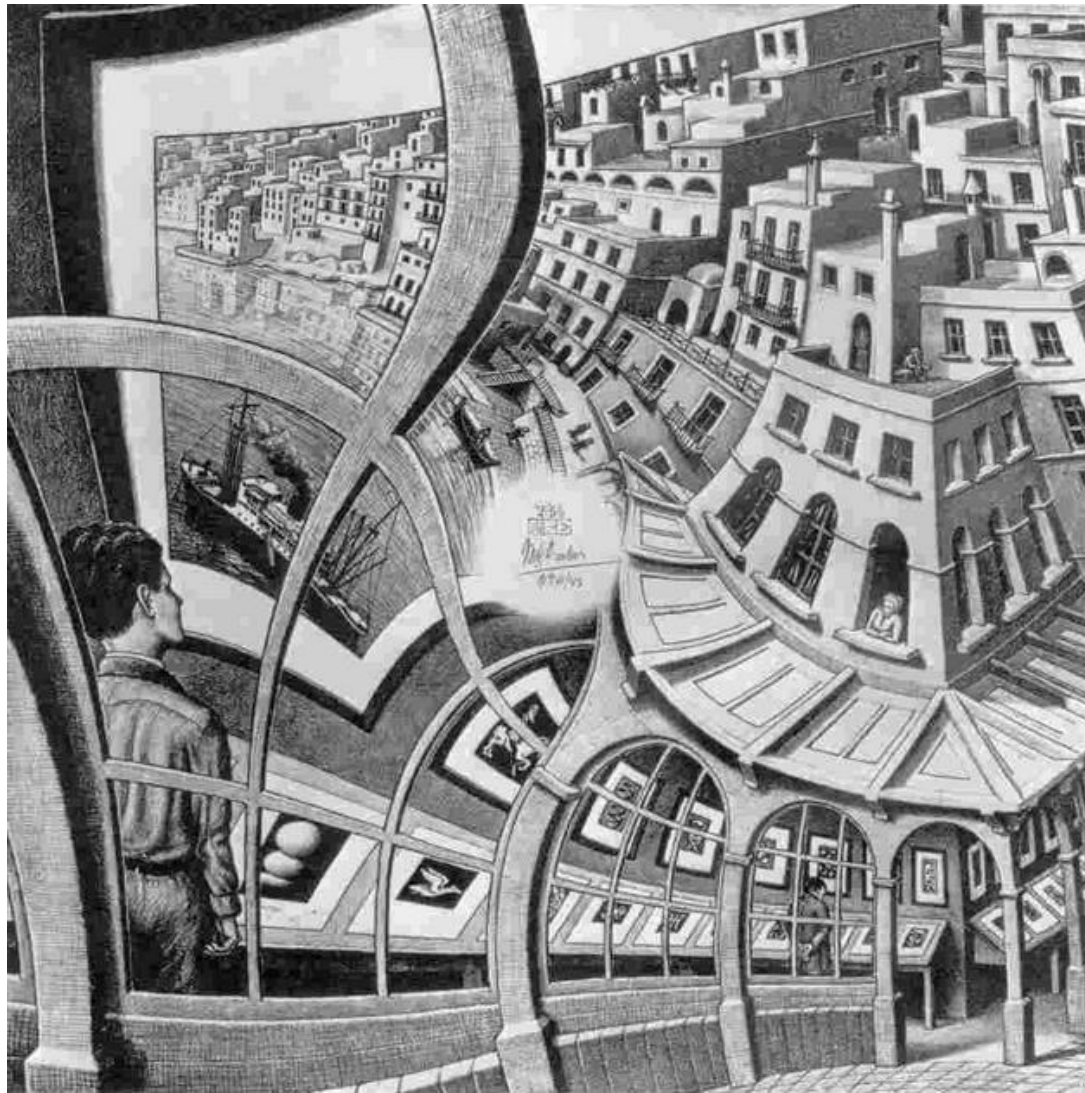












Print Gallery, M.C. Escher, May 1956, Lithograph, <https://mcescher.com>



DREILÄNDERPARK
PARC DES TROIS PAYS
DRIELANDENPARK